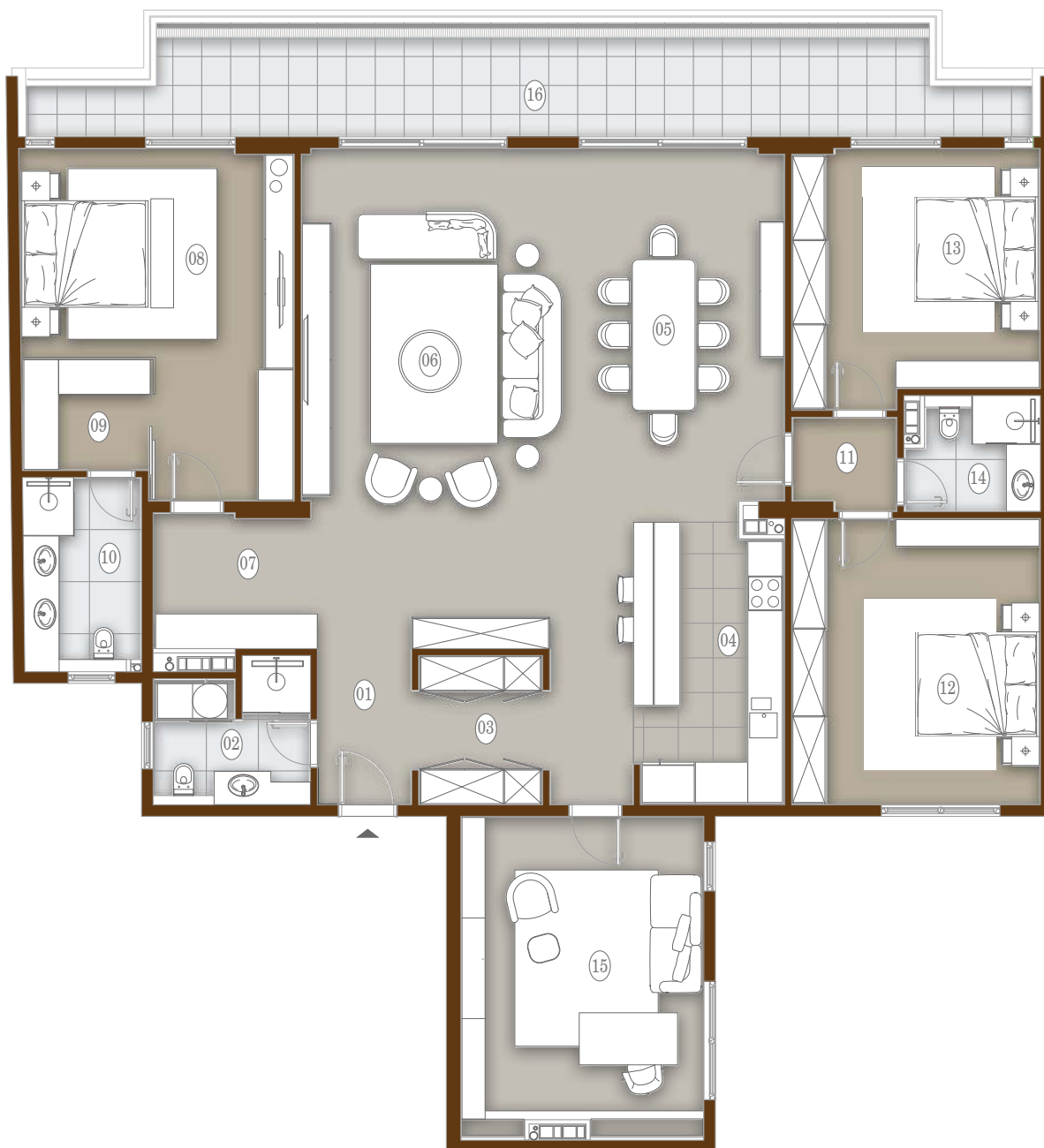


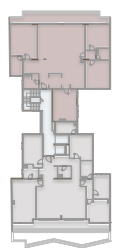


RESAVSKA 25



povučeni sprat II

## RESAVSKA 25 | PENTHAUS 32



01 ULAZNI HODNIK	4.29m <sup>2</sup>	09 GARDEROBER	4.30m <sup>2</sup>
02 KUPATILO SA VEŠERNICOM	5.69m <sup>2</sup>	10 KUPATILO	6.40m <sup>2</sup>
03 HODNIK SA GARDEROBOM	5.77m <sup>2</sup>	11 HODNIK	2.70m <sup>2</sup>
04 KUHINJA	20.36m <sup>2</sup>	12 SPAVAĆA SOBA	20.70m <sup>2</sup>
05 TRPEZARIJA	24.34m <sup>2</sup>	13 SPAVAĆA SOBA	18.12m <sup>2</sup>
06 DNEVNI BORAVAK	36.55m <sup>2</sup>	14 KUPATILO	4.06m <sup>2</sup>
07 HODNIK	6.14m <sup>2</sup>	15 RADNA SOBA	22.52m <sup>2</sup>
08 SPAVAĆA SOBA	22.67m <sup>2</sup>	16 TERASA	26.91m <sup>2</sup>

UKUPNA NETO POVRŠINA:

231.52m<sup>2</sup>

