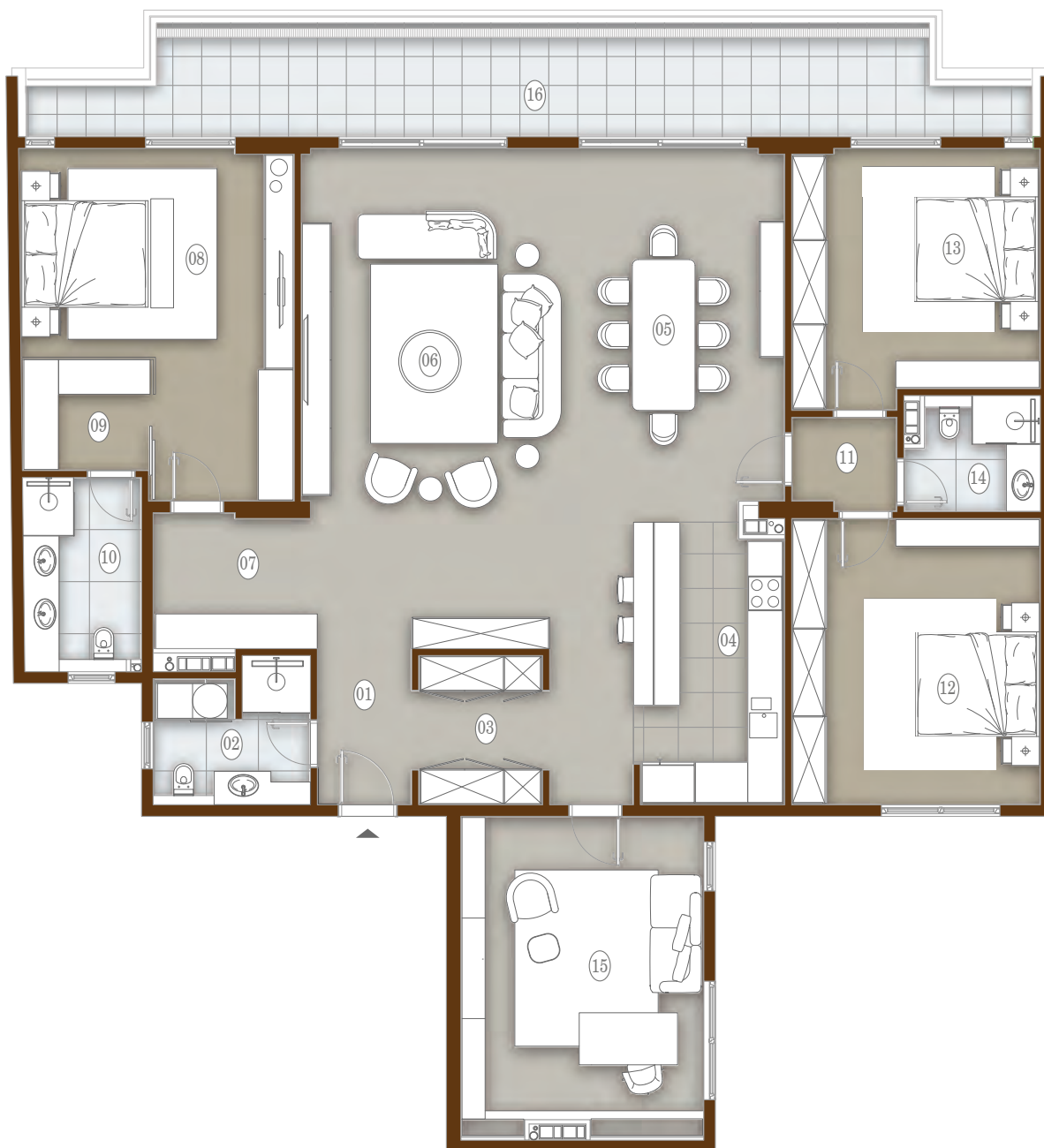


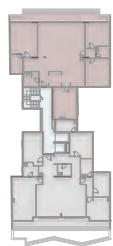


RESAVSKA 25



povučeni sprat II

RESAVSKA 25 | PENTHAUS 32



01 ULAZNI HODNIK	4.29m ²	09 GARDEROBER	4.30m ²
02 KUPATILO SA VEŠERNICOM	5.69m ²	10 KUPATILO	6.40m ²
03 HODNIK SA GARDEROBOM	5.77m ²	11 HODNIK	2.70m ²
04 KUHINJA	20.36m ²	12 SPAVAĆA SOBA	20.70m ²
05 TRPEZARIJA	24.34m ²	13 SPAVAĆA SOBA	18.12m ²
06 DNEVNI BORAVAK	36.55m ²	14 KUPATILO	4.06m ²
07 HODNIK	6.14m ²	15 RADNA SOBA	22.52m ²
08 SPAVAĆA SOBA	22.67m ²	16 TERASA	26.91m ²

UKUPNA NETO POVRŠINA:

231.52m²

